

DOUBLE TAKE



Twin sisters look alike, of course, but it's what's on the inside that counts. These two Horizon sisterships show just how different twins can be.

Words - Louisa Beckett

Photography - Horizon Yachts and Yachtvid



Debbie Lou's owners prefer a traditional look; the salon (top) sets the tone with a mix of burl and straight-grain veneer carried throughout the boat (center). They also decided to forgo the Jacuzzi on the flybridge deck.



At first glance, showgoers walking past the two sparkling white Horizon yachts displayed in adjacent slips at the 2015 Palm Beach International Boat Show might be excused for thinking they were identical. The two Horizon P-series tri-deck motor yachts are sisterships, based on the same hull design by naval architect John Lindblom and showcasing the same nicely proportioned exterior styling. But anyone who had the good fortune to board both the P105 *Debbie Lou* and the spec yacht P110 #323 immediately realized that inside their fiberglass skins, these two yachts were far from identical and embody very different visions of life on the water.

In fact, not one of the four yachts launched to date in Horizon's P105-P110 series has been the same. The first, a P105, is a three-stateroom

widebody version built for a U.S. West Coast client. The second, a 108-footer, is a four-stateroom charter yacht with an extra-large Jacuzzi and bar area on the top deck, perfect for parties under the stars. The third hull in the series, P110 #323, is a yacht Horizon built for its own inventory that made her U.S. debut in Palm Beach during the show. At 110 feet, she continues Horizon's trend toward "LOA creep."

"From the P108, the yard said it was a natural progression to go to a 110," said Horizon Yachts Director Roger Sowerbutts. "We could even do a 112."

As he showed us the P110 at the show, Sowerbutts explained that the hydraulic swim platform – the first for this series – had lengthened the LOA by two feet. As for the other three feet, he said, "You will see a little more room throughout the boat; an inch here and an inch there."

Debbie Lou, though the fourth hull in the P series, reverts to the original length of 105 feet, and for good reason. "If it were one foot longer, it wouldn't fit," the owners said, referring to her home dock. These repeat Horizon clients moved up from an 85-footer and took delivery this past spring.

Debbie Lou's elegantly traditional interior design is a large part of what sets the yacht apart from other models in the series. The wife designed the interior in collaboration with Horizon's head of interior design, Esha Tsai. Taiwanese camphor and Carpathian elm burl, intricate handcrafted crown moldings, soffits, door frames and accent tables the wife



designed herself add contrast to dark African makoré paneling and cabinetry. "They are very accommodating," she said of Horizon.

"Unmatched" is the word her husband used to describe the shipyard's woodworking skills. "Nobody else in the industry does woodwork like it," he said.

The shipyard sent him and his wife as many hardwood samples as it took for them to find the batch with just the right grain for the look they wanted to achieve. Once they found the woods they liked, they asked for a 70 percent sheen finish. "It makes the grain come out without being in your face," the husband said. "We don't like glossy."

By contrast, the P110 has a bright, contemporary interior design also created by Tsai and Horizon's in-house design team. It features unusual light walnut paneling installed with the wood grain running horizontally instead of vertically and a glossy finish.

Bulkheads, bed headboards and other surfaces aboard the yacht feature ultramodern, sculpted textures designed by CAD and machined by a CNC router at the Horizon shipyard. "The P110's interior design was influenced by feedback from Horizon customers," Sowerbutts said. "They didn't want to lose the classic woods and finishes, but wanted a more contemporary feel."

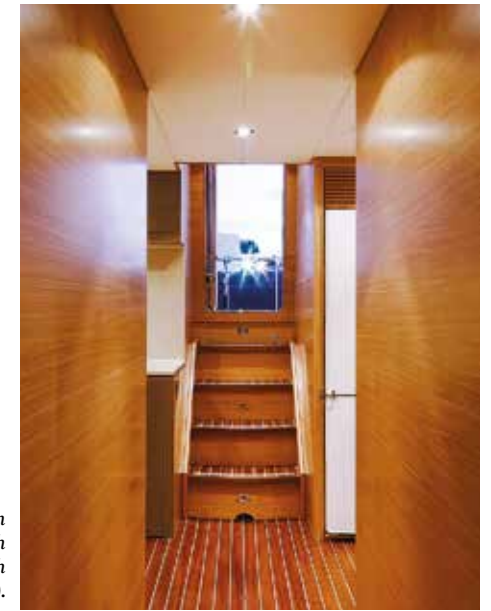
Debbie Lou's salon has a more formal feel. In addition to the dark-stained wall paneling, wood flooring neatly frames the custom carpeting, and the television is mounted behind an oil painting that rolls down to hide

the screen. "I hate to walk on the boat and all you see is the TV," the husband said.

A wooden pillar helps set off *Debbie Lou*'s dining area from the salon. Above, a deep soffit has a mirrored inset that reflects the graceful chandelier. "When the grandkids are on board, we like to have the family sit together," the husband said, so they requested a round table that seats six, with a leaf that expands it into an oval seating 10.

On the P110, the dining area is open to the salon with a more modern style. Its table is rectangular, with eight chairs. A golden oyster shell panel mounted on the bulkhead adds

Aiming for a contemporary look, the Horizon designers used light-stained walnut with horizontal grain throughout the P110, which has a Jacuzzi on the flybridge deck (below).





Debbie Lou's owners worked with the yard on the layout of their master suite, formal dining salon (top) and upgraded galley (below).



texture, while the lighting fixture overhead looks like a galaxy of stars.

Forward on the P110 is a country kitchen that is very light and open, with a large peninsula counter offering the chef an abundance of plating space. A huge white marble refectory table under the forward windows lets guests share a casual meal or watch the chef at work.

Debbie Lou also has a country kitchen, but her owners made many changes to it because for them, it is an owner and guest area rather than a service area; the wife does all the cooking for the family when they are aboard. Their galley features upgraded appliances, including a Wolf range, and an even larger peninsula return than on the P110. The U-shaped settee wraps around two granite tables. "If it's cold outside in New England in the spring, it's nice to have a place to sit together while my wife cooks," the husband said. "Boating is about being together as a family."

Although a three-stateroom lower-deck layout is available, both yachts on display at the Palm Beach show have four staterooms. The P110 has the standard plan, which includes a generous full-beam master suite aft, two twin staterooms that convert to kings when you slide one berth over the nightstand to meet its mate, and a forward VIP. *Debbie Lou's* owners added a Pullman berth to their starboard-side twin so that three grandchildren could bunk there together and made the port cabin a double.

The two yachts' flybridges show marked contrasts. The P110 has a Jacuzzi and a built-in counter with ice machine, refrigerator, grill and storage – making it equally well-suited for private cruising or charters – whereas on *Debbie Lou*, "We never use the Jacuzzi and we don't charter the boat," the husband said. *Debbie Lou's* owners love to cruise with their

Debbie Lou's elegantly traditional interior design is a large part of what sets the yacht apart from other models in the series.



Formal but fun, the P110's dining room is a well-defined space that opens directly onto the salon.



children and grandchildren, ages four and younger. They asked Horizon for protective Plexiglas panels on the safety rails and to forgo the Jacuzzi, although the deck is plumbed for it in case a future owner would want one.

The husband on *Debbie Lou* is an experienced owner/operator who brings a captain along only to take over the helm when he wants to relax with family. As such, he gave Horizon detailed technical and equipment specifications for *Debbie Lou*. "If you ask the yard, they probably learned a lot from me. I am a demanding owner," he said. "I got a lot of special things on this boat. I demanded a DNV Class document for Structural and Stability. I also got stainless steel pipes instead of hoses in the engine room for safety."

Both the P110 and *Debbie Lou* are equipped with Maretron yacht monitoring systems, but the husband upgraded his yacht to an OctoPlex breaker system. "There are no more manual breakers. It's all on an iPad [or] on a touchscreen," he said. "I feel it makes the boat more modern and saves weight."

A more difficult demand for the shipyard was his request for Tier 3 Caterpillar diesels during a time when the yachting industry had just begun transitioning from Tier 2 engines to the new, higher-environmental-standard diesels. *Debbie Lou* has the first pair of Tier 3 Caterpillars ever installed in a Horizon. "They went out of their way to get the Cats," he said. "There's zero smoke."

Horizon's P-series models can best be characterized as "semi-production" with standard hullforms, superstructures, machinery spaces and GAs, but these two superyachts clearly illustrate the shipyard's willingness to meet or exceed owners' expectations. As *Debbie Lou's* owner put it, "They make it so you have a smile on your face." ■

See more on the iPad edition



By contrast, the P110 has a bright, contemporary interior design also created by Esha Tsai and Horizon's in-house design team.



The P110's large country kitchen features a wide marble table where guests can have a casual meal. The spacious master suite takes advantage of the full 23-and-a-half-foot beam (above).

PHOTOGRAPH: SHAW MCCUTCHEON (CENTER)

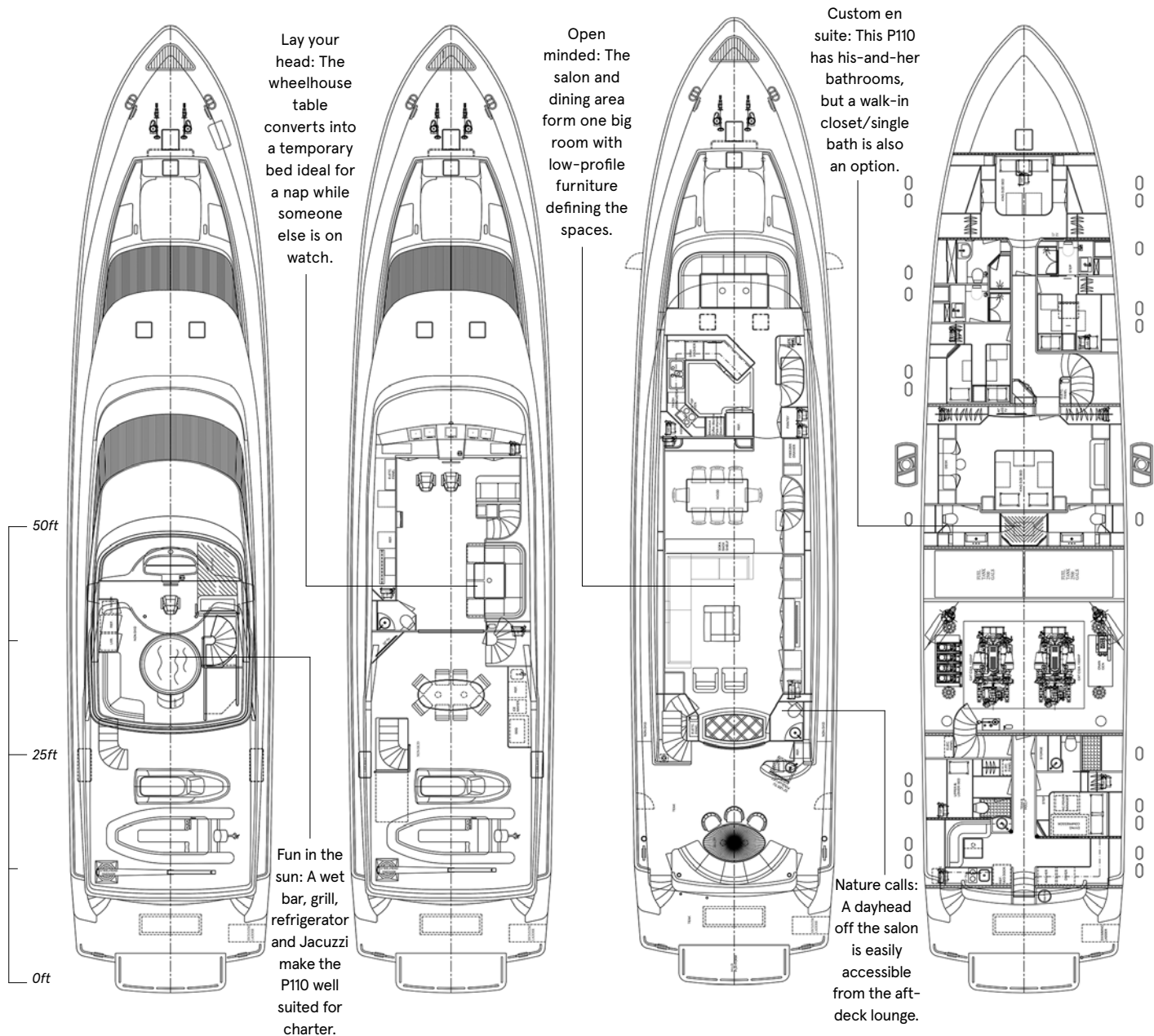
P110 - *Horizon*

Flybridge deck

Upper deck

Main deck

Lower deck

**LOA:** 110' (33.5m)**LWL:** 96' 3" (29.3m)**Beam:** 23' 6" (7.2m)**Draft:** 6' 4" (1.9m)**Displacement:** 133 tonnes**Power:** 2 x 1,900-hp
Caterpillar C32A**Speed (max/cruise):**
20/17 knots**Range:** 1,800 nm
@ 11 knots**Fuel capacity:**
5,000 U.S. gallons**Thrusters:** ABT hydraulic
bow/stern**Stabilizers:** ABT TRAC
zero speed**Generators:**
2 x 50kW Onan**Freshwater capacity:**
850 U.S. gallons**Owners and guests:** 8**Crew:** 4**Construction:** FRP**Naval architecture****and exterior styling:**
John Lindblom**Interior design:**
Horizon**Builder/year:**

Horizon/2013

Kaohsiung, Taiwan

U.S. headquarters:

North Palm Beach, Florida

t: (561) 721-4850

w: www.horizonyachtusa.com